

TIIG

INJURY SURVEILLANCE IN THE NORTH WEST OF ENGLAND

Furness General Hospital Emergency Department

Monthly Bulletin: October 2012 to September 2013

This bulletin provides a breakdown of all injury attendances to Furness General Hospital Emergency Department (ED) between October 2012 and September 2013.

During these twelve months, there were 6,614 injury attendances to the ED. The month with the highest attendance was July 2013 with 961 attendances compared to just 269 in January 2013 (**Figure 1**).

There were more males than females presenting at the ED between October 2012 and September 2013 (males=3,862; 58%) (**Figure 1**).

Figure 2 illustrates the age group of ED attendances for each month. Almost a third (32%) of attendees were aged 30-59 years (n=2,097) with three in ten (30%) aged 15-29 (n=1,959).

The source of referral to the ED is shown in **Table 1**. The majority (93%) of attendances were self-referrals (n=6,161). Four per cent were referred by the emergency services (n=248) and 3% were referred by a General Practitioner (GP) (n= 177).

Table 2 details the injury group of ED attendances. Almost two-thirds (65%) of attendances were classified as other injury (n=4,301). Sports injury accounted for 17% of attendances (n=1,098) and 8% were due to road traffic collisions (RTCs) (n=554). Injuries caused by deliberate self-harm (DSH) (n=342) and assault (n=319) each accounted for 5% of attendances.

The incident location for attendances to Furness General Hospital ED is displayed in **Table 3**. A third (33%) of incidents occurred in a public place (n=2,198). Nearly three in ten (28%) were recorded

as other location (n=1,875) followed by 26% which occurred at home (n=1,752).

Table 4 illustrates the discharge destination for injury attendances. Just less than two-fifths (37%) of attendees were discharged with no follow-up treatment required. One-fifth (20%) were discharged requiring follow-up treatment with a GP (n=1,352), followed by 14% admitted into hospital (n=916) and 13% referred to the fracture clinic (n=852).

Assault attendances

Between October 2012 and September 2013 there were 319 assault-related injury attendances to Furness General Hospital ED. The month with the highest attendance was November 2012 with 34 attendances, compared to 18 in April 2013 (**Figure 3**).

The majority (76%) of assault attendees presenting at the ED were male (males=244) (**Figure 3**).

Table 5 details the age group of assault attendances for each month. Half (50%) were aged 15-29 years (n=158), followed by 43% aged 30-59 (n=136).

Table 6 shows the incident location for assault injury attendances. The primary incident location was in a public place (n=174; 55%), followed by 18% recorded as other location (n=56) and 17% which occurred at home (n=54).

The discharge destination for assault attendees are illustrated in **Table 7**. Forty-four per cent were discharged (n=140), followed by 41% requiring follow-up treatment (n=130). Six per cent of assault attendees were admitted into hospital (n=20).

Figure 1: ED injury attendances by gender and month, October 2012 to September 2013

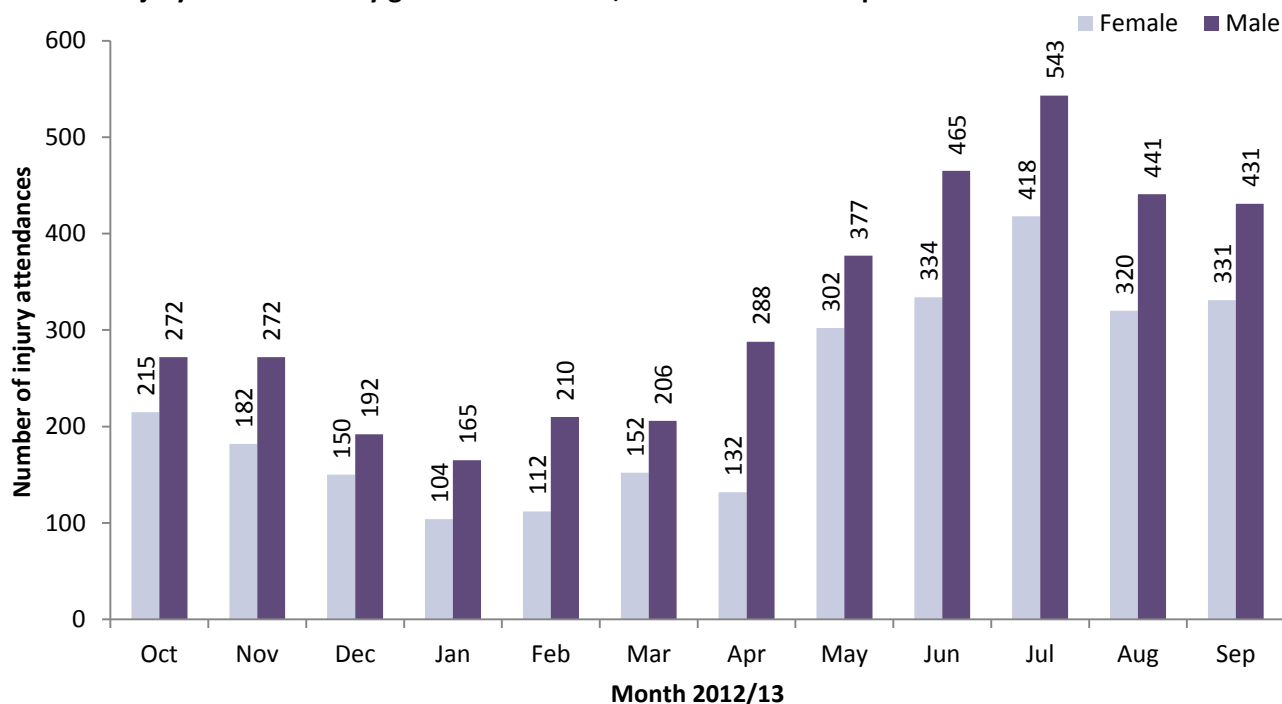


Figure 2: Age group of ED injury attendances by month, October 2012 to September 2013

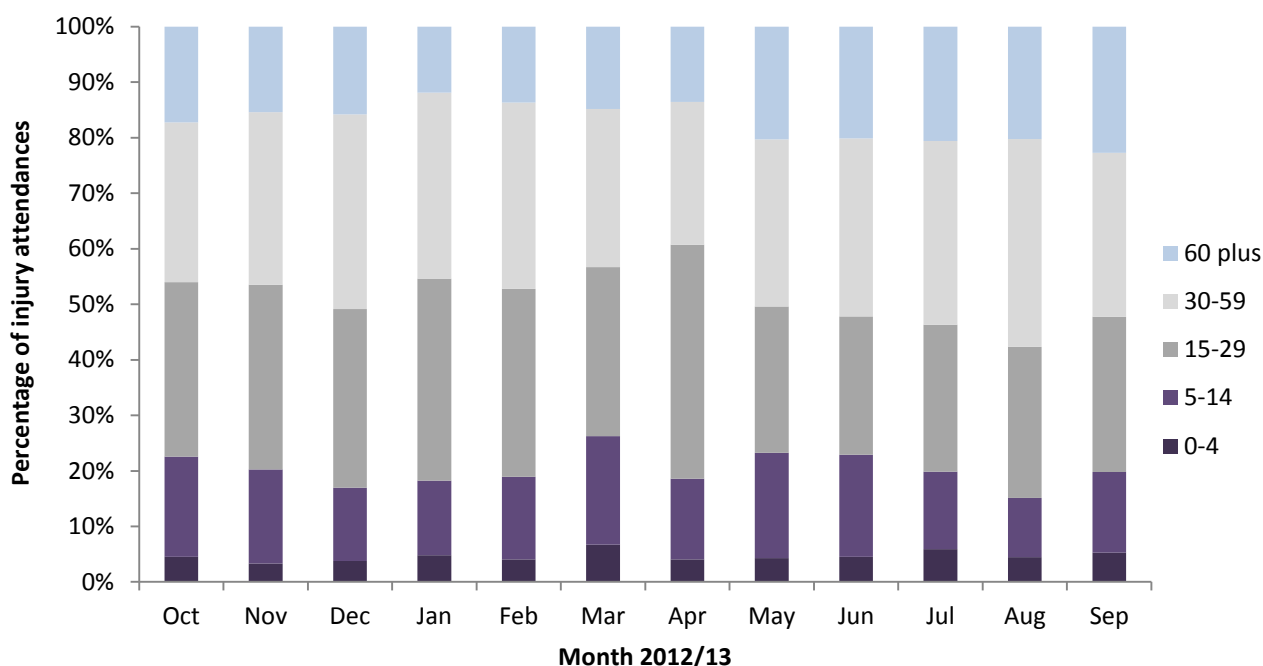


Table 1: ED injury attendances by source of referral and month, October 2012 to September 2013¹

Source of referral	Oct	Nov	Dec	Jan	Feb	Mar	Apr	May	Jun	Jul	Aug	Sep	Total	%
Self-referral	462	429	314	242	292	328	397	628	754	911	696	708	6161	93
Emergency services	15	17	21	21	24	21	20	16	24	20	25	24	248	4
GP	<10	***	<10	***	***	***	***	33	<25	28	<40	30	177	3
Educational establishment	***	<10	***	***	***	***	***	***	0	0	0	0	18	0
Other	0	0	0	0	0	***	0	0	***	***	***	0	5	0
Police	0	0	0	***	0	0	0	***	0	***	0	0	***	0
Health care provider	0	0	0	0	***	0	0	0	0	0	0	0	***	0
Total	487	454	342	269	322	358	420	679	799	961	761	762	6614	100

¹ Please note that all numbers less than five have been suppressed (with ***) in line with patient confidentiality and if there is only one number less than five in a category then two numbers will be suppressed to prevent back calculations from totals.

Table 2: ED injury attendances by injury group and month, October 2012 to September 2013*²

Injury group	Oct	Nov	Dec	Jan	Feb	Mar	Apr	May	Jun	Jul	Aug	Sep	Total	%
Other injury	267	242	215	131	147	152	212	480	580	741	593	541	4301	65
Sports injury	119	96	45	41	70	94	113	107	113	135	61	104	1098	17
RTC	43	62	39	37	61	43	42	39	42	35	49	62	554	8
DSH	31	20	16	30	20	39	35	27	42	25	29	28	342	5
Assault	27	34	27	30	24	30	18	26	22	25	29	27	319	5
Total	487	454	342	269	322	358	420	679	799	961	761	762	6614	100

* Due to low numbers, firework injuries have been included in the 'other injury' category (n=1).

Table 3: ED injury attendances by incident location and month, October 2012 to September 2013²

Location	Oct	Nov	Dec	Jan	Feb	Mar	Apr	May	Jun	Jul	Aug	Sep	Total	%
Public place	197	179	142	105	145	160	193	186	178	287	207	219	2198	33
Other	65	56	50	44	26	55	56	236	328	364	337	258	1875	28
Home	146	128	96	92	100	96	133	169	201	222	173	196	1752	26
Educational establishment	48	51	18	<25	29	31	16	46	53	40	***	49	402	6
Workplace	31	40	36	<10	22	16	22	42	39	48	<45	40	387	6
Total	487	454	342	269	322	358	420	679	799	961	761	762	6614	100

Table 4: ED injury attendances by discharge destination and month, October 2012 to September 2013^{2,3}

Discharge destination	Oct	Nov	Dec	Jan	Feb	Mar	Apr	May	Jun	Jul	Aug	Sep	Total	%
Discharged - no follow-up	183	183	137	111	148	164	177	241	263	285	254	291	2437	37
Discharged - follow up care by GP	109	96	85	27	39	47	75	146	169	247	162	150	1352	20
Admitted	54	44	30	28	33	29	40	101	138	144	149	126	916	14
Fracture clinic	65	61	43	42	54	54	78	77	93	112	82	91	852	13
ED clinic	32	33	16	23	23	20	23	41	54	70	40	51	426	6
Out-patient clinic	14	17	9	18	12	15	10	27	25	33	25	25	230	3
Left before being treated	16	9	8	11	<10	18	11	22	23	<35	25	12	195	3
Transferred to other HCP	5	***	***	***	***	6	***	13	17	17	17	10	98	1
Other health care professional	5	6	6	***	0	***	***	8	12	11	***	***	60	1
Left having refused treatment	***	0	***	***	0	0	***	***	***	5	***	***	23	0
Other	***	***	***	***	0	***	***	0	***	5	***	***	19	0
Died in department	0	***	***	0	0	0	0	***	***	***	0	0	6	0
Total	487	454	342	269	322	358	420	679	799	961	761	762	6614	100

Assaults

Table 5: ED assault attendances by age group and month, October 2012 to September 2013²

Age group	Oct	Nov	Dec	Jan	Feb	Mar	Apr	May	Jun	Jul	Aug	Sep	Total	%
5-14	***	***	***	***	***	***	***	***	0	***	0	***	<25	7
15-29	16	18	14	16	11	16	8	13	10	9	13	14	158	50
30-59	8	13	11	11	10	11	6	12	12	14	16	12	136	43
60 plus	***	***	***	***	***	***	***	***	0	***	0	***	***	1
Total	27	34	27	30	24	30	18	26	22	25	29	27	319	100

² Please note that all numbers less than five have been suppressed (with ***) in line with patient confidentiality and if there is only one number less than five in a category then two numbers will be suppressed to prevent back calculations from totals.

³ HCP = Health Care Provider.

Figure 3: Number of ED assault attendances by gender and month, October 2012 to September 2013⁴

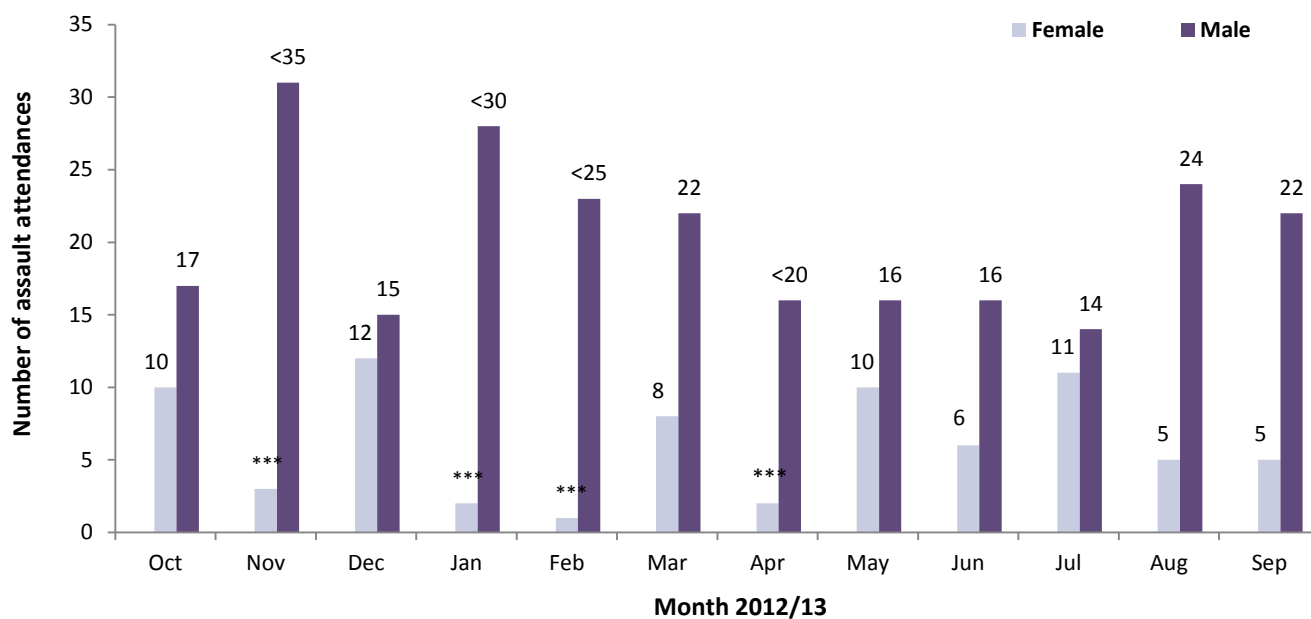


Table 6: ED assault attendances by incident location and month, October 2012 to September 2013⁴

Location	Oct	Nov	Dec	Jan	Feb	Mar	Apr	May	Jun	Jul	Aug	Sep	Total	%
Public place	20	17	18	14	14	14	8	13	11	12	19	14	174	55
Other	***	***	5	9	***	6	***	***	6	7	5	***	56	18
Home	***	8	***	<10	***	5	***	6	***	***	***	7	54	17
Educational establishment	***	***	***	***	***	***	***	***	0	0	0	***	18	6
Workplace	0	***	***	0	***	***	***	***	***	***	***	***	17	5
Total	27	34	27	30	24	30	18	26	22	25	29	27	319	100

Table 7: ED assault attendances by discharge destination and month, October 2012 to September 2013⁴

Discharge destination	Oct	Nov	Dec	Jan	Feb	Mar	Apr	May	Jun	Jul	Aug	Sep	Total	%
Discharged	13	11	13	12	14	15	6	11	13	7	14	11	140	44
Follow-up	11	18	10	11	7	14	10	9	5	12	10	13	130	41
Other	***	***	***	***	***	***	***	***	0	***	***	0	22	7
Admitted	***	***	***	***	***	***	***	***	***	***	***	***	20	6
Unknown	0	0	0	0	0	0	0	***	***	***	0	***	7	2
Total	27	34	27	30	24	30	18	26	22	25	29	27	319	100

Published October 2013

Karen A Critchley (née Swarbrick) – TIIG Researcher/Analyst

Centre for Public Health, Faculty of Education, Health and Community, Liverpool John Moores University,
2nd Floor, Henry Cotton Building, Liverpool L3 2ET

T: 0151 231 4498 | E: K.A.Swarbrick@ljmu.ac.uk | W: www.tiig.info and www.cph.org.uk

(Please note data requests should be made through the TIIG website)

⁴ Please note that all numbers less than five have been suppressed (with ***) in line with patient confidentiality and if there is only one number less than five in a category then two numbers will be suppressed to prevent back calculations from totals.